



Calon Hwyllo Cymru - The Heart of Welsh Sailing

When it comes to hosting major national and international championships, the Welsh venue of Pwllheli is increasingly on the radar of event organisers.

Clwb Hwyllo Pwllheli Sailing Club is website provides lots of information about the club and events – see www.pwllhelisailingclub.co.uk

Pwllheli lays claim to being the gateway to some of the best sailing waters in the UK, with Cardigan Bay offering weak tidal streams and stable winds against the stunning backdrop of Snowdonia and the rugged north Wales coastline. Located on the Llŷn Peninsula, in the Gulf Stream and to the west of the Welsh mountains, Pwllheli has a mild, drier climate than the rest of Wales.



Our track record is excellent and over the last four years Pwllheli SC has hosted many events for some of the biggest racing classes around and has catered for more than 6,000 competitors.

In 2007 we hosted the Cadet Worlds and in 2008 the RYA UK Youth championships and Optimist Nationals.

In 2009, action at the club included the Mirror Worlds,

Topper and Cadet Nationals. During 2010 National championships were hosted for the Finns, Toppers, 29ers, 49ers and RS400s.

2011 is as busy as ever starting off with Optimist Selectors, 420 and Laser Qualifiers, 29ers Grand Prix, Optimist Nationals, Sprint 15 Nationals, 420 Nationals and UK Finn Masters plus the annual Welsh Youth and Junior Championships.

Each winter sees more than 1,500 squad sailors coming to train. Pwllheli SC is also working with Plas Menai to offer a venue for London 2012 Pre-Games Training Camps.



The club has a secure compound for keeping boats overnight and a marquee for events. Car parking is free. Please note the marina car park and berth holder facilities are not available to you. Looking to the future, the club is now in the process of planning a purpose-built events centre with changing facilities and showers, training rooms and a function hall, in partnership with the Welsh Assembly Government, Wales European Funding Office and Gwynedd Council.

Arriving

When arriving for your nationals at Pwllheli follow the direction signs and advise of stewards.

Unload your Optimist in car park unloading area on the right –then go to the marquee for registration and measurement.

Dinghies must be wheeled to the secure compound where there will be designated areas for each fleet.

Please do not take your vehicle into the dinghy compound.

Take your road trailer and store in the yacht compound - follow the signs and advise from stewards.

If you have a Rib go to the Club Office to register and receive your info pack about launching and recovery. RIBs that are not part of the authorised safety fleet will need to register and pay a fee of £60 for the week for use of the moorings and ferry.



the south and south east of the club. A tally system will operate and fleets will be launched separately. Please listen to the PA system for instructions.

Launching

Events launch from Glan-y-mor beach behind the marina workshops and compounds, a sheltered long sandy beach ideal for large numbers of boats. The sailing area is then just a short sail away, directly to

the south and south east of the club. A tally system will operate and fleets will be launched separately. Please listen to the PA system for instructions.

Wind

Pwllheli SC is located on the south side of the Llyn Peninsula and the relatively shallow waters of Cardigan Bay combine moderate tidal and sea conditions with varied patterns of winds. The sailing waters are open to the South Westerly



winds which prevail throughout most of the year – as evidenced by the trees and hedges all leaning the same way – which the club says allows for largely unbiased racing areas.



South Westerly – the bay is exposed to the sea and this is the cleanest direction for breeze. This direction will see less shifts and longer oscillations so you will be holding a tack for longer, and need to know your numbers so you know whether you are on a lifted or headed tack. A compass will be important as there will be no visual references looking out to sea. It is also likely to be wavy for the wind strength, an important factor when considering how to get the best boat

speed. You're unlikely to get many gains from shifts so boat speed – getting your boat set up right, getting a feel for the waves, and body movement within in the boat - will be key. Depending on the wind strength consider whether deeper sails with more twist rather than flatter sails might help power through the waves. If you are not used to sailing on the sea and are due to be at Pwllheli for an event, it is well worth trying fit in some practise at sailing on waves before you go.

Westerly – Depending on where the course is, there may be more breeze along the shoreline due to compression so it's worth checking out the right hand side of the course which might provide lifts and gusts, but you could also find big holes and never escape the corner. Think about the possibility of pairing up with another boat and doing split tacks before the start. Also consider the tide – there might be less tide along the shore.

North West to East – This will be shifty flatter water as the wind has come from the mainland. Look for possible stronger wind bands / gusts coming from areas of lower land such as valleys, by looking at what's happening on the water. Be alert for lifts and headers.

South East to South – Going up the beat you now have the mainland on your left so there may be more wind up this side of the course if it is close enough to the shore. This is probably unlikely so as with a South Westerly it should be a fairly clear track, albeit with flatter water and a

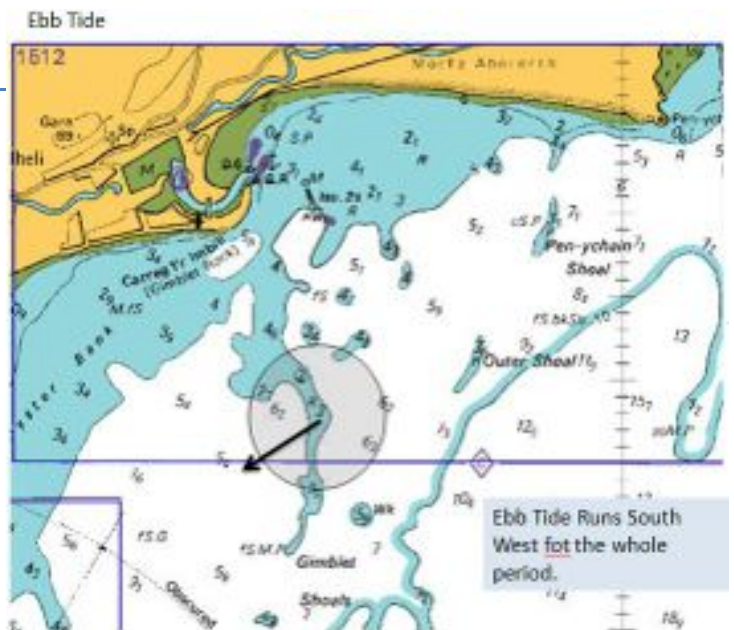
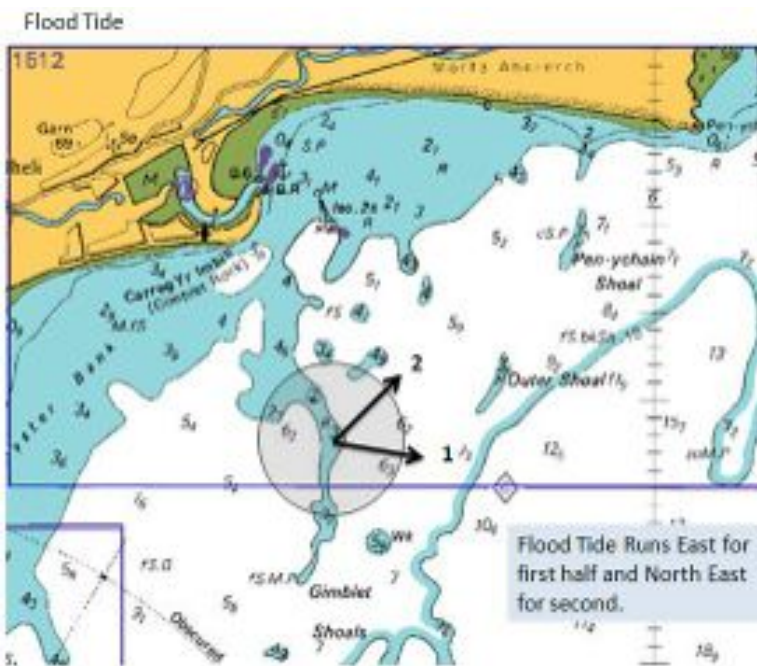


few more shifts. Nevertheless, look out for any land effects on the left which might be consistently there. Again a split tack could be useful.



Sea Breeze - The Llyn peninsular might generate a very small localised sea breeze but this is unlikely to last. The main sea breeze in summer is likely to be generated as a result of warming on the mainland in settled and sunny weather, coming from the South West in the afternoon: meteorological information for Pwllheli shows on 12 per cent of days an offshore morning wind is replaced between 10.30am and 12.30pm by a sea breeze which persists for the rest of the afternoon and is normally steady and reliable.

Tides



The Tide is very weak with a peak tide of 0.3knots and an average tide of 0.1 knots

Finally, Clwb Hwyllo Pwllheli Sailing Club is an RYA affiliated members club. Please respect our simple rules and you will receive a warm Welsh welcome. During a busy event patience is a virtue. We aim to make your stay enjoyable and as stress-free as possible. If you have any problems please speak to staff in the Club or members of the volunteer events team.

Clwb Hwyllo Pwllheli Sailing Club
 Glan Y Don, Pwllheli, Gwynedd LL53 5YT.
 Telephone: 01758 613343
 Email: events@pwllhelisailingclub.co.uk
 Website: www.pwllhelisailingclub.co.uk